



A passionate, Australian-owned and design-led collective with the confidence to take a unique point of view and the technical expertise to deliver. By balancing aesthetics, budget and performance, we have become the premier source for interior designers and architects - producing luxury, custom-made carpets and rugs for high-end residential, commercial and hospitality projects worldwide.



MELBOURNE

SYDNEY

NEW YORK

LONDON



NEXUS

FOCUS | LONDON DESIGN FESTIVAL

Nexus is a dialogue of the existential and the aesthetic, a sensory experience showcasing sculpturally-driven rugs and carpets that function as art - a tale of nature and connection told through the medium of design. Channelling TSAR's commitment to push global boundaries, Nexus is a formulation of new and existing collections bound together by their conceptual design and storytelling, creating an elevated experience in the interior realm.

PASSAGE

The Passage collection is in collaboration with architect and interior designer Brooke Aitken. The Passage Collection was inspired by a vivid dream Aitken had regarding the passage of time. In the morning following, she sketched a series of ephemeral graphic patterns evocative of her vision, which lived on her drawing board for years to come until she was presented with the opportunity to partner with TSAR Carpets to quite literally bring her dream to life.

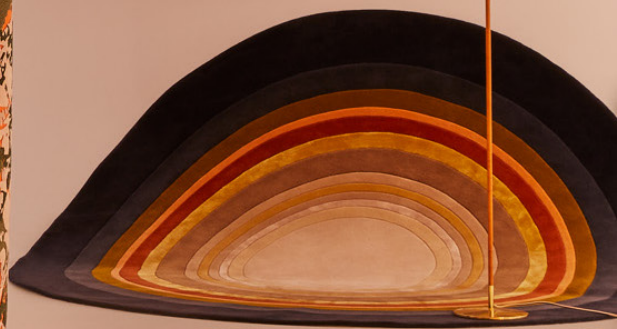




FORMA

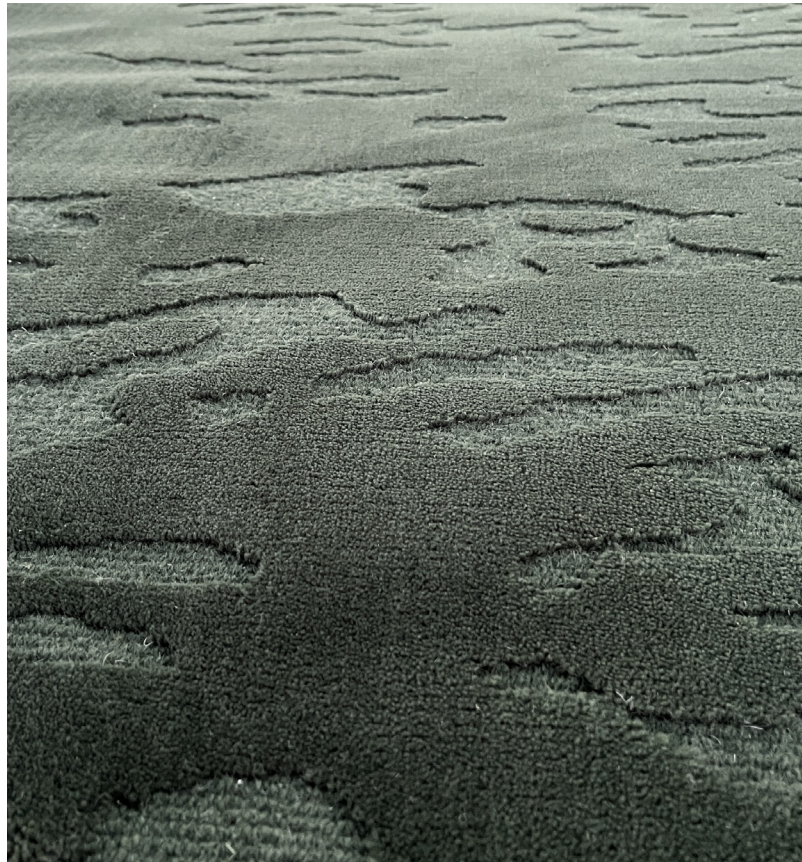
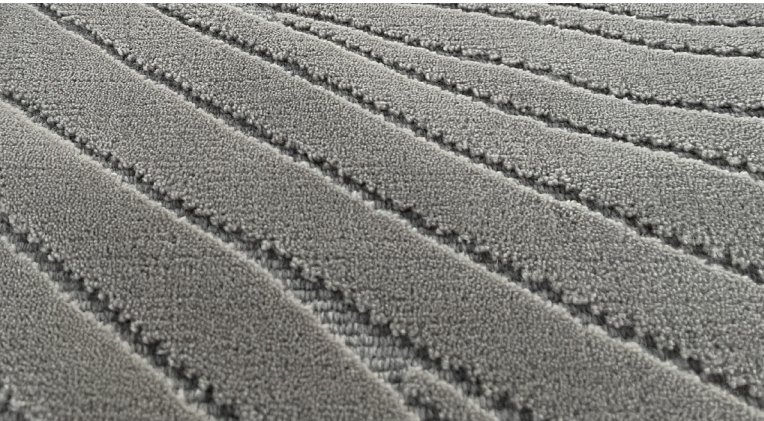
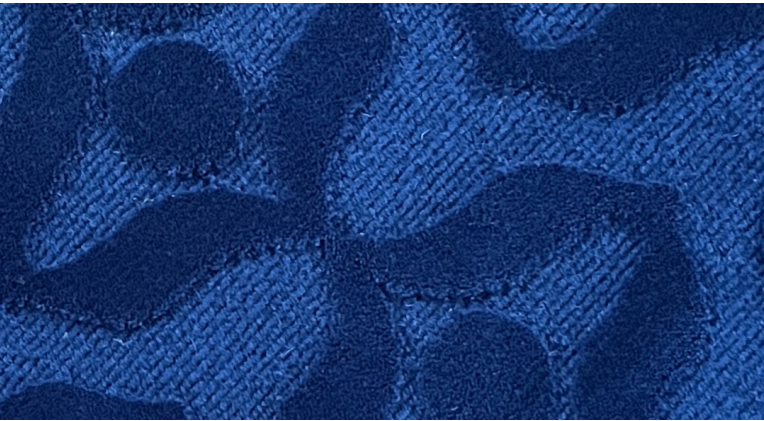
The Forma collection is an expansive series of high-concept floor coverings that set a new high-watermark in rug design and manufacturing techniques. Featuring original, never-before-seen textures, dazzling colour combinations and inspired patterns, the collection of 25 designs explores the themes of energy and optimism - blurring the lines of applied design and fine art.





SENSO

The forthcoming Senso collection sets the tone for a texturally contemporary collection, embarking on another new chapter for TSAR. Senso was designed to inject a sensory translation of mood within a space and interpolate a sense of light and texture through the designs. It is a culmination of all things TSAR, elegant yet daring, contemporary yet timeless. Taking cues from our surrounding nature mirrored against our internal desires, Senso will usher in a new precedent in the long-running legacy of TSAR and was first showcased at Focus, ahead of the public launch.





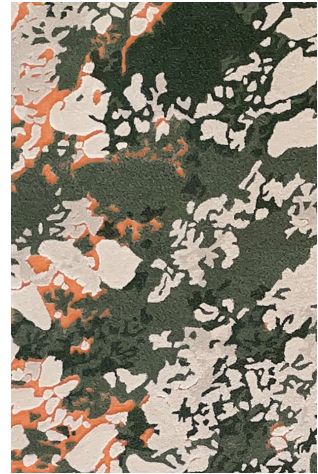
FOCUS FEATURED DESIGNS



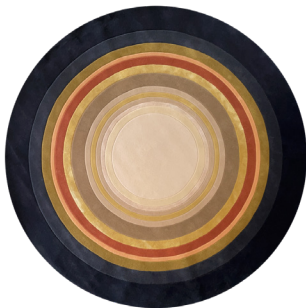
Night



Bean



Cali



Kindsey



Origin



Pompidou

FOCUS FEATURED DESIGNS - COMING SOON



Cinnamon



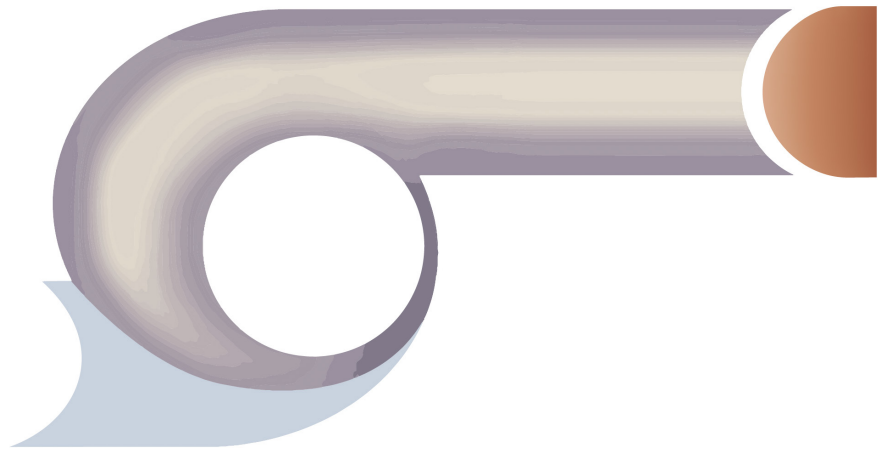
Linhas



Tex



Vale De Douro



Solar + Eclipse

CONTACT

MELBOURNE

250-252 High St.
Windsor VIC 3181
Australia

SYDNEY

Level 3, 147 Darling Point Road,
Darling Point, 2027 NSW
Australia

LONDON

126 New Kinds Rd, Fulham
London, SW6 4LZ
United Kingdom

NEW YORK

99 Madison Ave, Suite 405
New York, NY, 10016
United States

MUNICH

Iltsistr. 2; 81827
Munich
Germany

ERCAN SARAC

Showroom & Project Manager
PH: +61 3 9525 0488
M: +61 (0) 415 413 883
EM: esarac@tsar.com.au

MICHELLE POWER

Business Development & Design Associate
PH: +61 8 6186 6043
M: +61 (0) 452 539 771
EM: mpower@tsar.com.au

ANDREW SMITH

Sales Director
C: +44 (0) 7593 535 853
EM: andrew@tsarcarpets.co.uk

ALIAHN SHARPLEY

Studio Manager
PH: +1 646.415.7968
C: +1 646.357.0563
EM: aliahn@tsarusa.com

HENDRIK DREYER

Europe Sales Director
C +49 (0) 172 - 522 5733
EM: hendrik@tsarcarpets.com

